

## Wilmington Public Schools - Performing Arts Department Elementary Instrumental Music Program of Studies

### Students can expect to:

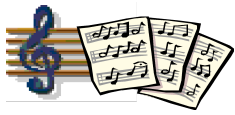
- **PLAY** a musical instrument using proper techniques and appropriate tone production methods
- **READ** music and develop music literacy skills
- **CREATE** and **COMPOSE** music
- **DEVELOP** listening skills more fully
- **PRACTICE** 10 - 15 minutes each day, 4 or 5 days per week
- **RECEIVE** one group lesson each week with a highly qualified and certified music educator
- **RESPONSIBLY** make up all class-work that takes place while attending a band lesson
- **COMMIT** to one year of study of an instrument
- **PARTICIPATE** in the Beginning Band or Beginning String Orch.
- **PERFORM** in concerts (Band also in a parade)
- **MAKE MUSIC**
- **GAIN** the necessary skills for life-long participation in and enjoyment of music
- **HAVE FUN**

### Parents can expect to:

- **HEAR** strange (initially) and wondrous (eventually) sounds coming from their child's instrument
- **SUPPORT** their child's progress by supplying a quiet place for regular practice
- **ENCOURAGE** their child to practice 15 minutes each day, 5 days each week.
- **LISTEN**, perhaps repeatedly, to their child present "mini" concerts of their homework assignments
- **MODEL** a "stick with it" attitude for their child when they begin to confront challenges in developing music skills
- **SUPPLY** their child with the appropriate playing, cleaning and maintenance supplies for their instrument
- **RECEIVE** communications from their child's music teacher regarding their progress
- **BEAM** with pride as they hear and see their child make music and perform in concerts and on parade
- **ENJOY** music as a family

### Music teachers can expect to:

- **SHARE** their love and knowledge of music with students and their parents
- **GREET** students who are enthusiastic and well prepared for their weekly lessons
- **PRESENT** various methods of teaching music literacy skills and instrumental techniques to a wide variety of learners
- **COMMUNICATE** with parents via phone or email regarding student progress
- **PREPARE** written progress reports for the parents and students during each marking period
- **SUPPORT** and **ENCOURAGE** students to realize their fullest potential in music
- **MODEL** appropriate musicianship and skills on all instruments
- **DISTRIBUTE** new lesson schedules, permission slips, and informational notices to students in a timely fashion
- **BE INSPIRED** on a daily basis by sharing the joy of making music with your child



**Wilmington Public Schools - Performing Arts Department**  
**Elementary Instrumental Music Program of Studies**